

1. Table of Contents (This Page)  
Created on Fri Jun 24 01:50:32 2011

2. top

3. bottom

4. plated-drill

5. unplated-drill

6. componentmask

7. soldermask

8. topsilk

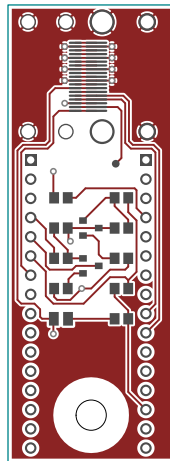
9. bottomsilk

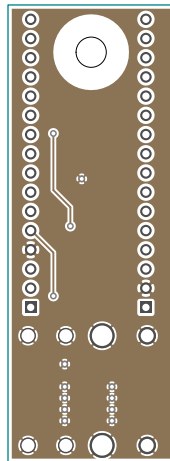
10. toppaste

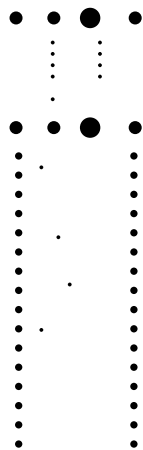
11. topassembly

12. bottomassembly

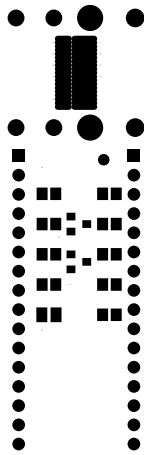
13. fab

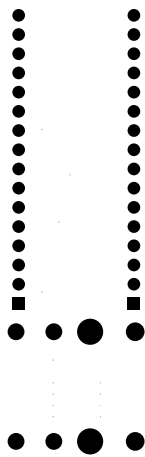


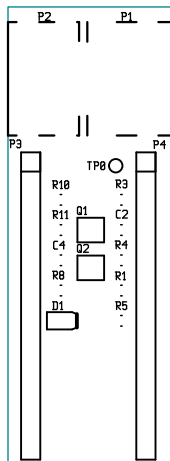




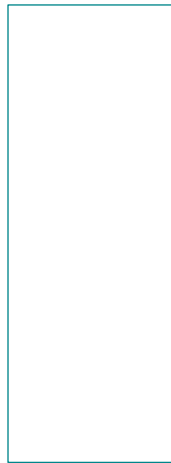


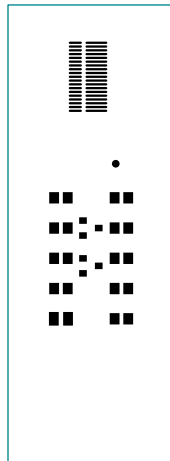


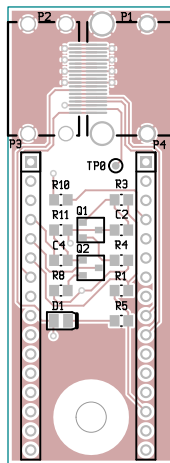


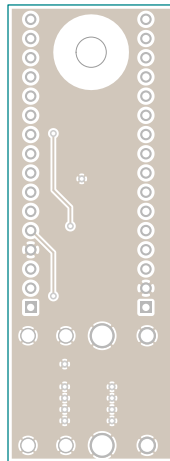












There are 5 different drill sizes used in this layout, 54 holes total

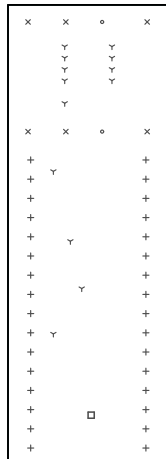
Symbol	Diam. (Inch)	Count	Plated?
Y	<u>0.020</u>	<u>13</u>	<u>YES</u>
+	<u>0.038</u>	<u>32</u>	<u>YES</u>
x	<u>0.068</u>	<u>6</u>	<u>YES</u>
o	<u>0.106</u>	<u>2</u>	<u>YES</u>
□	<u>0.158</u>	<u>1</u>	<u>NO</u>

Title: (unknown) - Fabrication Drawing

Author: Russ Dill

Date: Fri 24 Jun 2011 08:50:32 AM GMT UTC

Maximum Dimensions: 866.140000 mils wide, 2381.880000 mils



Board outline is the centerline of this 8.000000 mil rectangle - 0,0 to 866.140000,2381.880000 mils